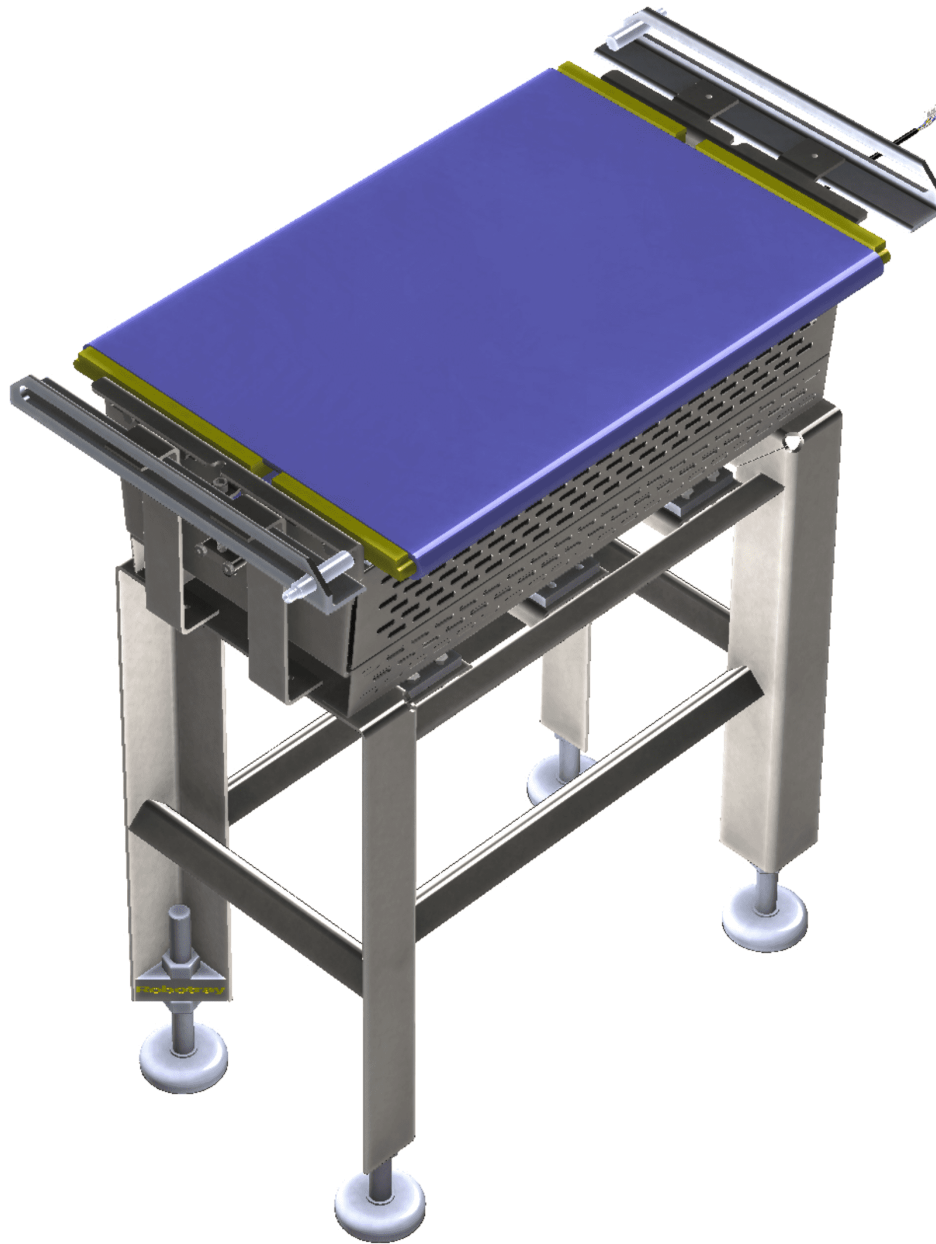


INLINE SCALE

DOUGH WEIGHING SYSTEM



INLINE SCALE:

Robotray® Inline Scale. Dough weighing system for production lines, incorporates balanced conveyor belt module with integrated load cells. Dough pieces travel from end of the production line onto scale system and accurately records weights of product in full rows, ensures product specifications.

The weighting process is constantly under control. If any of the products do not meet the required technical specifications, the system can rectify the weight failure in three unique ways by allowing customer to choose the best option: Acoustic and visual alarms | Retractable system | Electronic data Exchange.

Implementation available on an existing conveyor, as it only requires positioning underneath, easy to place in any space no matter how small.

100% production control. Enhanced quality and legal compliance of the product, facilitates immediate rectification of possible imbalances in the production flow, and saves money.

INLINE SCALE

DOUGH WEIGHING SYSTEM

SPECIFICATIONS:

- Weighs product on conveyor
- Constant function that avoids stoppages in production.
- Minimal stops in production for weighing
- Full control of production.
- Facilitates the rectification of possible imbalances in the production immediately.
- The system rectifies the error in production
- Stainless steel and anodized aluminum construction
- Continuous recording of cycling performance with self-diagnostics
- PLC control choices: AB or Omron or Siemens.
- Color HMI Touchscreen, multilingual menus
- **BASE SYSTEM MEASUREMENTS:**
 - **WIDTH:** 114.815cm/45.20in
 - **LENGTH:** 137.16cm/54in
 - **HEIGHT:** 71.12cm/28in
- **ELECTRICAL SPECIFICATIONS:** 208-240 Volts / 50-60 Hz / 3-Phase
- **BASE SYSTEM WEIGHT:** 138Kg / 290LBS

BENEFITS:

- Eliminate Labor
- Reduce workmans' comp costs
- Prevent employee litigation expenses
- Increase production. Higher run rates
- Compact. Space saving designs
- Flexible. Expandable capabilities
- Open Frame. Easy to clean & maintain
- Fast Payback. ROI of less than 12 months

HOW RECTIFY THE WEIGHT FAILURE:

- **Acoustic and visual alarms** signal the operator to remove the wrong weight dough pieces, make manual adjustments.
- **Retractile system** automatically removes the wrong weight dough pieces in the entire row, recycles, allows for unattended operation.
- **Electronic data exchange** provides signal to other modules (Guillotine, Divider, etc.) so that it can rectify the weight of the pieces.



Check the Video!!